



LE CHÂTEAU

LA FORÊT



Tentez de retrouver votre chemin dans ce château à l'architecture complexe tout en observant les multiples créatures qui séjournent en ces lieux. Vous avez terminé le puzzle ? N'en restez pas là ! Suivez les différents chemins, et révélez au fur et à mesure les cartes correspondant aux symboles rencontrés. En les superposant au puzzle, vous découvrirez les conséquences de vos choix ! Dans quel état atteindrez-vous la sortie ?




ESSAYEZ DE DÉCOUVRIR LE CHEMIN IDÉAL ET D'ARRIVER SANS UNE ÉGRATIGNURE !


1. Faites le puzzle !

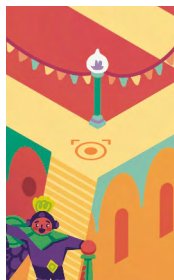
Reformez l'image, puis prenez le temps d'observer les différents chemins qui s'offrent à vous.

2. Sortez du donjon !



Placez d'abord en tas sur la table les cartes  face symboles violets visibles. Ensuite, posez votre doigt sur le personnage situé sur la plateforme START en bas (c'est le point de départ). Déplacez votre doigt le long des sentiers pour mimer son déplacement sur le puzzle. Ne sortez pas du chemin ! Lorsque votre doigt rencontre un symbole violet, prenez la carte correspondante dans le tas et superposez-la au puzzle de sorte que les illustrations coïncident.

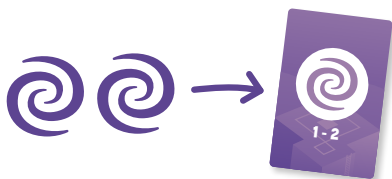


Découvrez ainsi ce qui arrive à votre personnage. Le symbole  vous indique d'où votre personnage doit ensuite repartir et quelles sont les directions possibles : placez alors votre doigt dessus et choisissez votre route jusqu'au prochain symbole violet. Laissez les cartes sur le puzzle jusqu'à atteindre l'emplacement EXIT, en haut au centre (c'est le point d'arrivée).



3. Découvrez votre résultat !

Une fois l'emplacement EXIT atteint, comptez sur le puzzle, le nombre de symboles  visibles (ceux recouverts ne sont donc pas pris en compte), puis retournez la carte  correspondante. Vous pouvez elle aussi la superposer au puzzle.



Recommencez autant de fois que vous le voulez pour découvrir le chemin idéal et arriver sans une égratignure !

Try to find your way around this castle, with its complex architecture, while observing the many creatures in its nooks and crannies. Did you finish the puzzle? The fun doesn't stop there! Follow different paths and gradually reveal cards that match symbols you uncover. By laying them on top of the puzzle, you'll discover the outcome of your choices! How will you reach the exit?




TRY TO DISCOVER THE BEST PATH AND ESCAPE UNSCATHED!


1. Finish the puzzle!

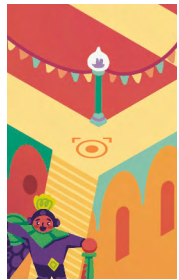
Remake the image, then take time to observe the different paths in front of you.

2. Escape the dungeon!



First place the cards  in a pile on the table with symbols side up. Then, put your finger on the character on the START space at the bottom (this is where your adventure begins). Move your finger along the paths to represent your progress through the puzzle. Don't stray from the path! When your finger reaches a purple symbol, take the matching card from the table, flip it over, and lay it on top of the puzzle so the illustrations line up.

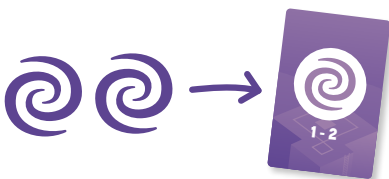


By doing this, you'll reveal what happens to your character. The  symbol shows you where your character must go next and which directions are available: place your finger on it and choose your journey to the next purple symbol. Leave the cards on the puzzle until you reach the EXIT space at the top (this is where your adventure ends).



3. Discover the outcome!

Once you reach the EXIT space, count the number of  symbols visible on the puzzle (so covered symbols do not count), then reveal the corresponding card . You can also lay this on the puzzle.



Restart as many times as you want to discover the best path and escape unscathed!

Trova la via d'uscita da questo castello labirintico dall'architettura complessa, ma fai attenzione alle creature che lo popolano! Hai finito il puzzle? Il divertimento non finisce qui! Segui i percorsi e scopri pian piano le carte con i simboli corrispondenti a quelli che incontri sul tuo cammino. Posizionando le carte sul puzzle, scoprirai il risultato delle tue scelte! Riuscirai a raggiungere l'uscita?


**CERCA IL PERCORSO MIGLIORE
E FUGGI INDENNE DAL CASTELLO!**




1. Completa il puzzle!

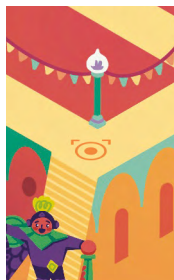
Ricostruisci l'immagine, poi osserva attentamente i vari percorsi disponibili.

2. Fuggi dal castello!


Per iniziare, impila le carte  sul tavolo con i simboli rivolti verso l'alto. Poi, metti il dito sul personaggio vicino a START nella parte inferiore dell'immagine (la tua avventura inizia da qui). Muovi il dito lungo i percorsi per avanzare lungo il puzzle. Non uscire dai percorsi! Quando raggiungi un simbolo viola con il dito, prendi la carta corrispondente dalla pila sul tavolo, girala e posizionala sul puzzle in modo che le illustrazioni combacino.

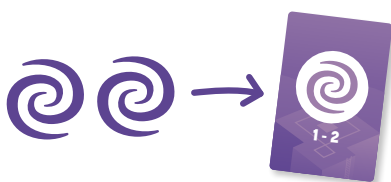


Così da rivelare la sorte del tuo personaggio. Il simbolo  indica la prossima destinazione del personaggio e le direzioni disponibili: posiziona il dito sopra di esso e scegli il percorso da seguire per raggiungere il simbolo viola successivo. Non togliere le carte dal puzzle prima di aver raggiunto l'uscita in alto, contrassegnata da EXIT (la tua avventura termina qui).



3. Scopri il tuo destino!

Una volta raggiunto lo spazio EXIT, conta i simboli @ visibili sul puzzle (in altre parole, i simboli coperti non vengono conteggiati) e poi scopri la carta  corrispondente. Anche questa carta può essere posizionata sul puzzle.



Ricomincia tutte le volte che vuoi per scoprire il percorso migliore e fuggire indenne dal castello!

Tentez de retrouver votre chemin dans ce château à l'architecture complexe tout en observant les multiples créatures qui séjournent en ces lieux. Vous avez terminé le puzzle ? N'en restez pas là ! Suivez les différents chemins, et révélez au fur et à mesure les cartes correspondant aux symboles rencontrés. En les superposant au puzzle, vous découvrirez les conséquences de vos choix ! Dans quel état atteindrez-vous la sortie ?




ESSAYEZ DE DÉCOUVRIR LE CHEMIN IDÉAL ET D'ARRIVER SANS UNE ÉGRATIGNURE !


1. Faites le puzzle !

Reformez l'image, puis prenez le temps d'observer les différents chemins qui s'offrent à vous.

2. Sortez du donjon !



Placez d'abord en tas sur la table les cartes  face avec les bords bleus visibles. Ensuite, posez votre doigt sur le personnage situé sur le START en bas à gauche (c'est le point de départ). Déplacez votre doigt le long des sentiers pour mimer son déplacement sur le puzzle. Ne sortez pas du chemin ! Attention, les portions de chemins qui sont entièrement cachées par d'autres éléments ne sont pas accessibles. Lorsque votre doigt rencontre un drapeau rouge, prenez la carte correspondante dans le tas et superposez-la au puzzle de sorte que les illustrations coïncident.



Découvrez ainsi ce qui arrive à votre personnage. Le symbole  vous indique d'où votre personnage doit ensuite repartir et quelles sont les directions possibles : placez alors votre doigt dessus et choisissez votre route jusqu'au prochain drapeau. Laissez les cartes sur le puzzle jusqu'à atteindre l'emplacement EXIT, en haut à droite (c'est le point d'arrivée).



3. Découvrez votre résultat !

Une fois le temple EXIT atteint, comptez sur le puzzle, le nombre de symboles  visibles (ceux recouverts ne sont donc pas pris en compte), puis retournez la carte  correspondante. Vous pouvez elle aussi la superposer au puzzle.



Recommencez autant de fois que vous le voulez pour découvrir le chemin idéal et arriver sans une égratignure !

Try to find your way around this castle, with its complex architecture, while observing the many creatures in its nooks and crannies. Did you finish the puzzle? The fun doesn't stop there! Follow different paths and gradually reveal cards that match symbols you uncover. By laying them on top of the puzzle, you'll discover the outcome of your choices! How will you reach the exit?




TRY TO DISCOVER THE BEST PATH AND ESCAPE UNSCATHED!


1. Finish the puzzle!

Remake the image, then take time to observe the different paths in front of you.

2. Escape the dungeon!



First place the cards  in a pile on the table with the blue-edged side up. Then, put your finger on the character on the START space at the bottom (this is where your adventure begins). Move your finger along the paths to represent your progress through the puzzle. Don't stray from the path! Careful: you cannot access parts of paths that are hidden behind other parts of the scene. When your finger reaches a red flag, take the matching card from the table, flip it over, and lay it on top of the puzzle so the illustrations line up.



By doing this, you'll reveal what happens to your character. The  symbol shows you where your character must go next and which directions are available: place your finger on it and choose your journey to the next flag. Leave the cards on the puzzle until you reach the EXIT space at the top (this is where your adventure ends).



3. Discover the outcome!

Once you reach the EXIT temple, count the number of  symbols visible on the puzzle (so covered symbols do not count), then reveal the corresponding card . You can also lay this on the puzzle.



Restart as many times as you want to discover the best path and escape unscathed!

Trova la via d'uscita da questa foresta, ma fai attenzione alle creature che lo popolano! Hai finito il puzzle? Il divertimento non finisce qui! Segui i percorsi e scopri pian piano le carte con i simboli corrispondenti a quelli che incontri sul tuo cammino. Posizionando le carte sul puzzle, scoprirai il risultato delle tue scelte! Riuscirai a raggiungere al tempio?




**CERCA IL PERCORSO MIGLIORE
E FUGGI INDENNE DAL CASTELLO!**


1. Completa il puzzle!

Ricostruisci l'immagine, poi osserva attentamente i vari percorsi disponibili.

2. Fuggi dal castello!



Per iniziare, impila le carte  sul tavolo con i bordi blu rivolti verso l'alto. Poi, metti il dito sul personaggio vicino a START nella parte inferiore sinistro dell'immagine (la tua avventura inizia da qui). Muovi il dito lungo i percorsi per avanzare lungo il puzzle. Non uscire dai percorsi! Attenzione, i tratti di percorso che sono completamente nascosti da altri elementi non sono accessibili. Quando raggiungi una bandiera rossa con il dito, prendi la carta corrispondente dalla pila sul tavolo, girala e posizionala sul puzzle in modo che le illustrazioni combacino.



Così da rivelare la sorte del tuo personaggio. Il simbolo  indica la prossima destinazione del personaggio e le direzioni disponibili: posiziona il dito sopra di esso e scegli il percorso da seguire per raggiungere la bandiera rossa successiva. Non togliere le carte dal puzzle prima di aver raggiunto l'uscita in alto a destra, contrassegnata da EXIT (la tua avventura termina qui).



3. Scopri il tuo destino!

Una volta raggiunto lo spazio EXIT, conta i simboli  visibili sul puzzle (in altre parole, i simboli coperti non vengono conteggiati) e poi scopri la carta  corrispondente. Anche questa carta può essere posizionala sul puzzle.



Ricomincia tutte le volte che vuoi per scoprire il percorso migliore e fuggire indenne dal castello!